

fall / winter 23

# Inspirational Looks FW 23



# ROY ROBSON



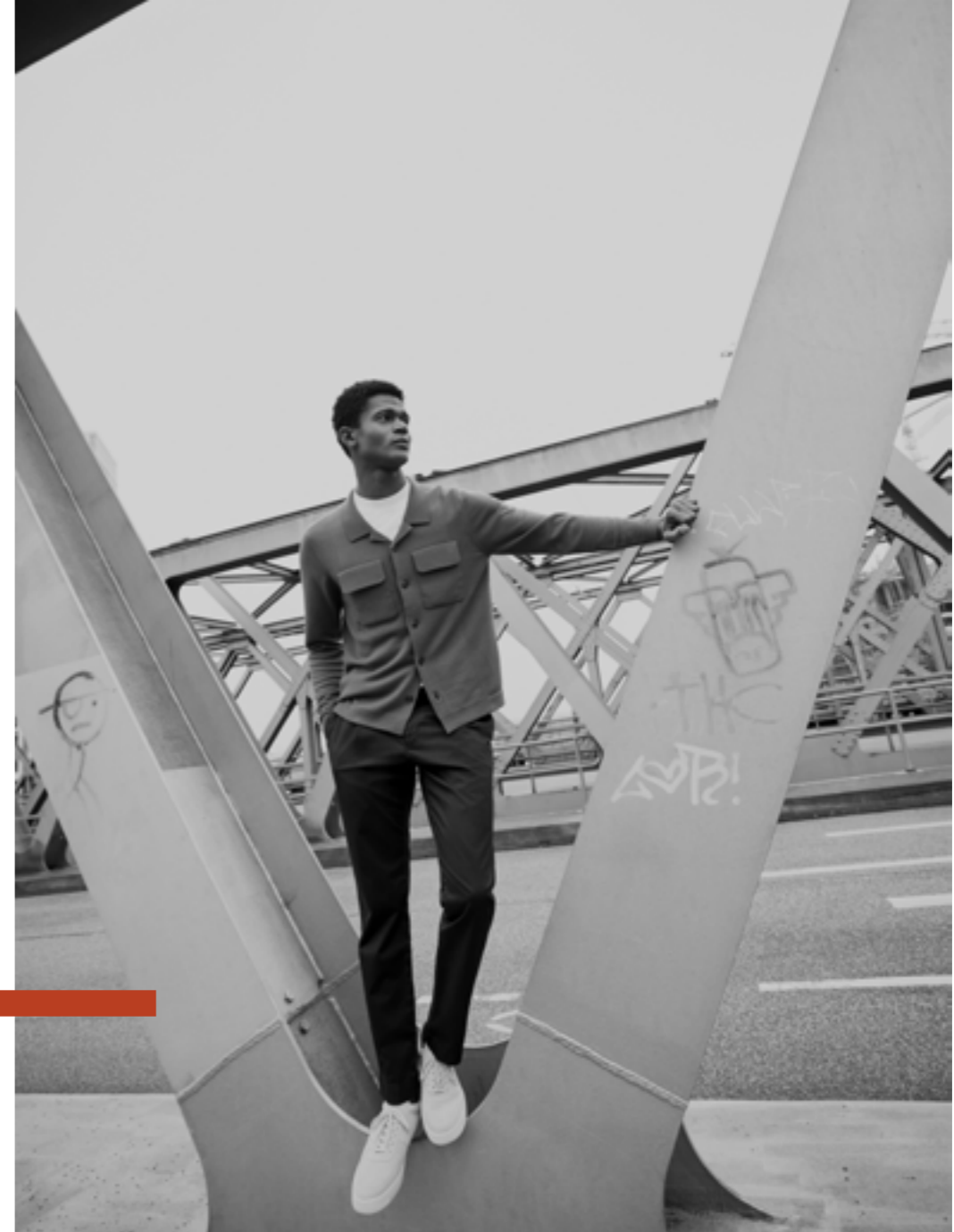
# INTO A NEW --- SETUP

fall / winter

# 23



**smart  
casual**



Outerwear 1903-A401, Knitwear 1862-A801,  
Trousers 1359-A401-952,  
Shoes 1681-V290, Hat 1287-A801





fall / winter '23

Jacket 1526-A040-2890,  
Trousers 1370-A001-740








METROPOLITAN CHIC

Everything flows. Everything is constantly transforming. Life is nothing but change, and fashion is just an expression of the steady flux. Our relationship with fashion is changing as well. We have different demands and we value other aspects today than we did yesterday. This is the mindset ROY ROBSON champions with its Fall/Winter 2023 collection 'Into A New Set Up.' Appreciation is at the heart of this collection – the appreciation of materials, of production, of the product itself.

We have created incredibly versatile looks. Smart-casual styles that can be transformed in any way, for formal or business events, for casual affairs – and for everything in between. The suit becomes a reliable companion in all settings, styled depending on the situation: with a shirt or a t-shirt, with a turtleneck or a chunky knit top, with a crewneck sweater or a hoodie ...

This is what we mean by 'The New Versatility.'



**The new versatility:  
smart-casual styles  
that adapt to  
every situation**

A large photograph of a man with curly hair, wearing a grey suit jacket over a dark hoodie, standing on a balcony. The background shows a railing and a cloudy sky. The text is overlaid on the left side of the image.



PORTRAIT OF A CITY



How do we express appreciation for products? By using them often, and enjoying doing so. This is made possible by the great compatibility of the Fall/Winter 2023 items. New materials and contemporary cuts are key. And the smart use of colour. We have combined neutral tones like Brilliant White and the dark navy shade Sky Captain with accent colours like Burnt Brick and Blue Lolite to create highlights for grey days.





# 2

**By combining  
neutral shades  
with accent colours  
we create highlights  
for grey days**





fall / winter 23

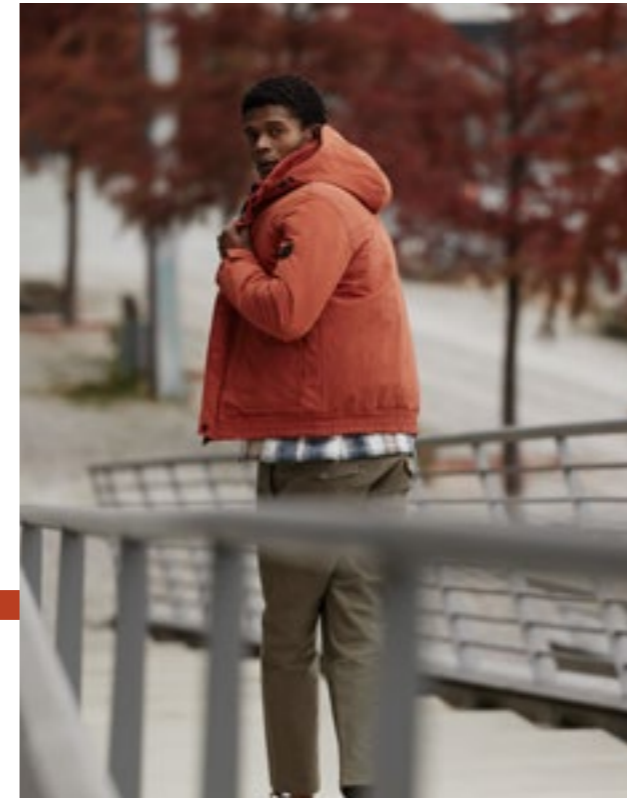


Jacket 1113-1060-1052, Trousers 1113-1060-140,  
Knitwear 1851-A801





**indoor**



**outdoor**



**nordic**

fall / winter 23



**urban**



Outerwear 1905-A270, Jacket 1118-H240-2172,  
Trousers 1118-H240-242, Knitwear 1854-A220, Shoes 1681-V201



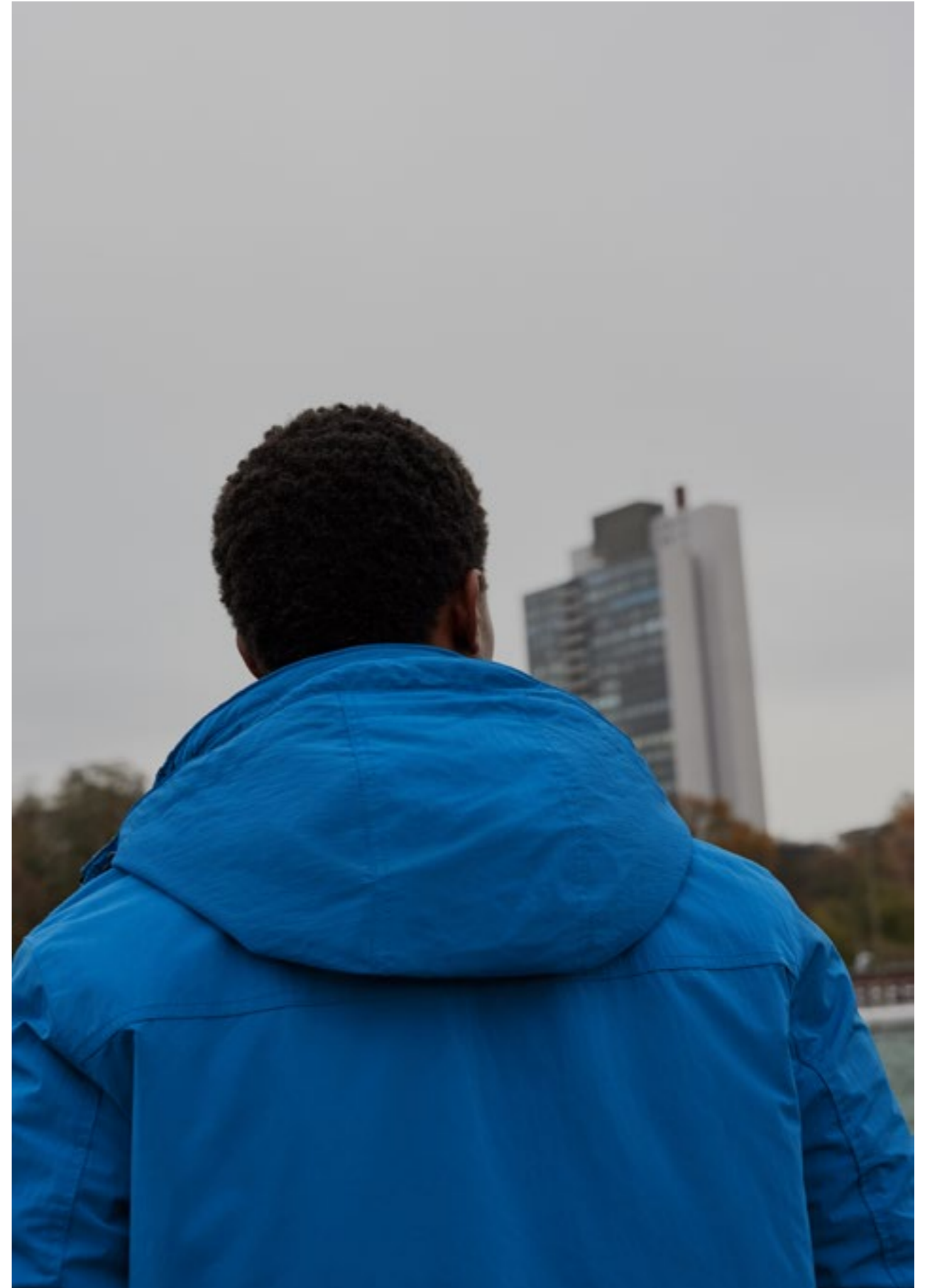
The change in patterns and cuts is subtle, yet remarkable. Everything becomes more relaxed, and more casual, without losing any attention to detail. Wider pant silhouettes provide more freedom of movement, as do more flexible materials. The double-breasted suit in particular has continued to evolve. With a wide peaked lapel and flap pockets, this suit is the ideal companion for a contemporary look.

# 3

fall / winter '23

**Level up: rich colours  
and quality materials  
transform casual outfits  
into smart-casual looks**





Outerwear 1914-A420, Trousers 1350-A220-965,  
Knitwear 1871-A420, Jersey 1830-A420, Shoes 1862-W127



# 4

**Everything becomes more relaxed, more casual, without losing any attention to detail**



fall / winter '23



Overshirt 1463-B260-1241,  
Trousers 1364-A801-964



Trousers 1363-B260-964, Jersey D4030-A100,  
Hat 1288-A801, Shoes 1682-W127



Jacket 1501-A260-2782, Trousers 1361-A301-963,  
Knitwear 1884-A290, Shoes 1681-V020





STAY CLASSY & WARM

The change of seasons is a transformation.

It gets colder and we need more layers to protect us.

This collection offers smart solutions for fall and winter – and for the transition period. Along with knit sweaters and turtle necks, it's the protective must-haves that stand out: the double-breasted coat with pepita patterning, the 2-in-1 jackets with hoods, or the simple single-breasted coats keep you warm and well-dressed throughout the cold months.

The outerwear comes in a variety of colours. Restrained neutrals for a subtle, chic look and rich colours like Burnt Brick and Blue lolite as statements against the winter blues.



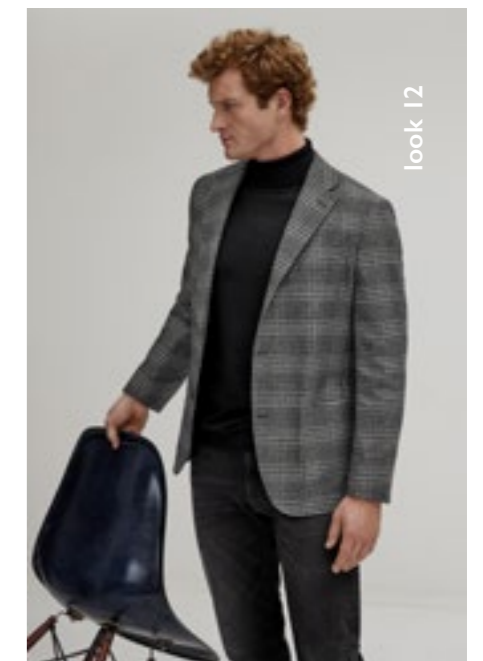
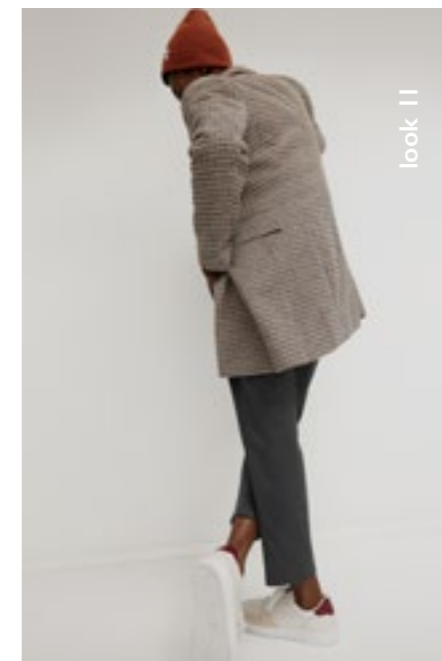
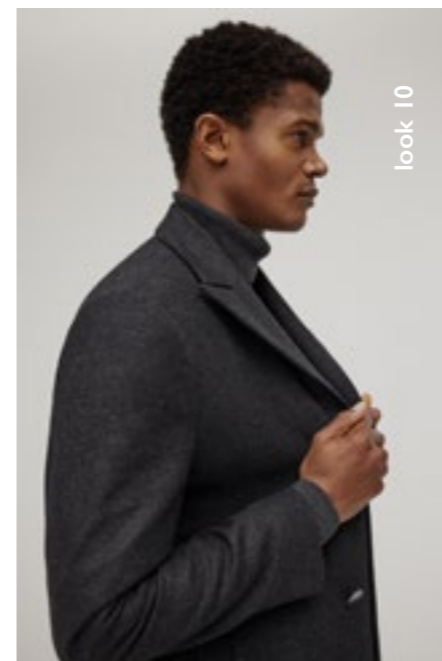
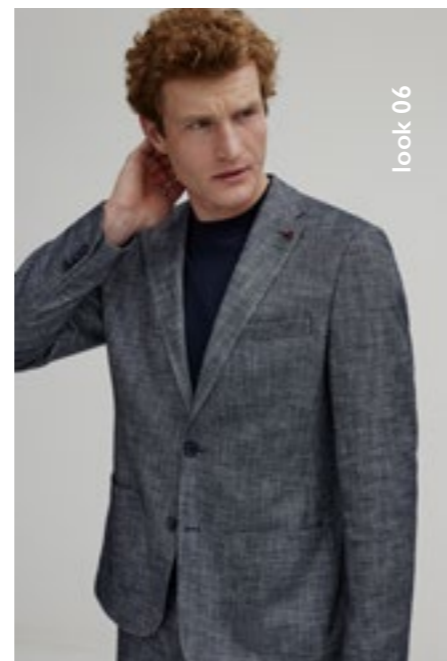
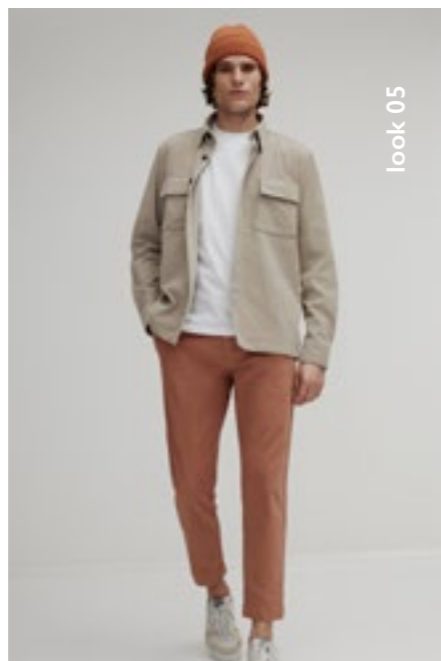
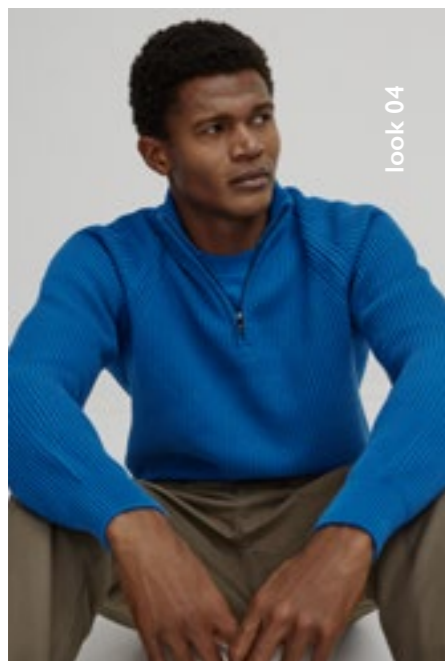
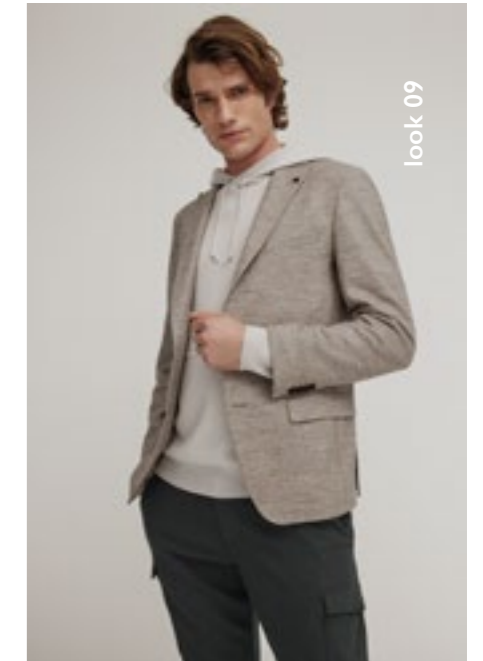
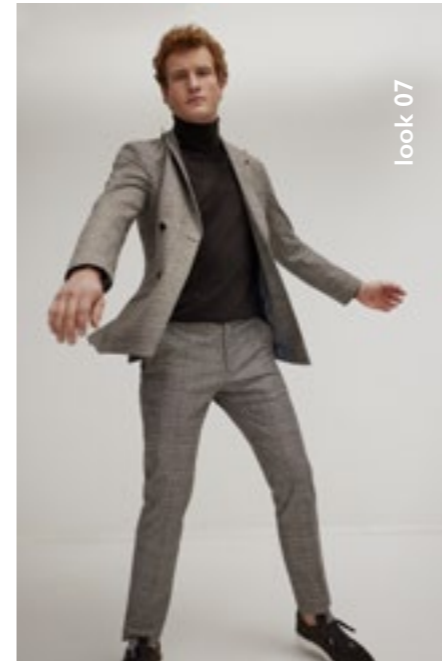
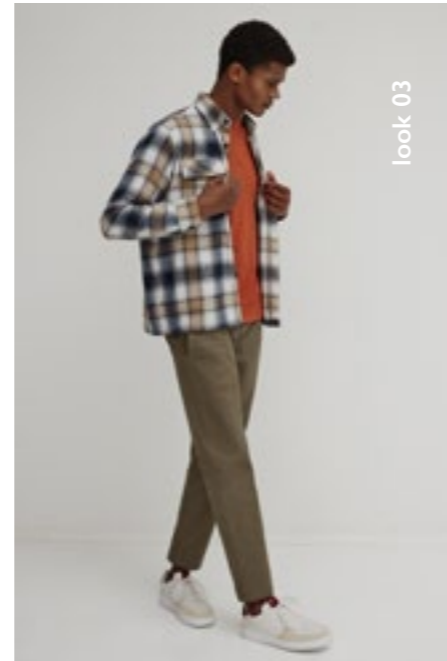
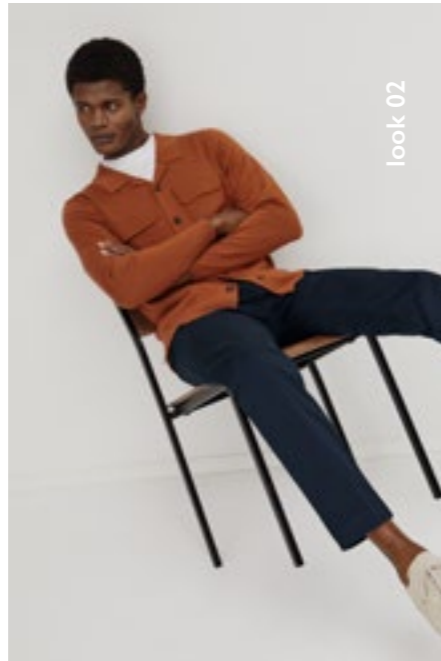
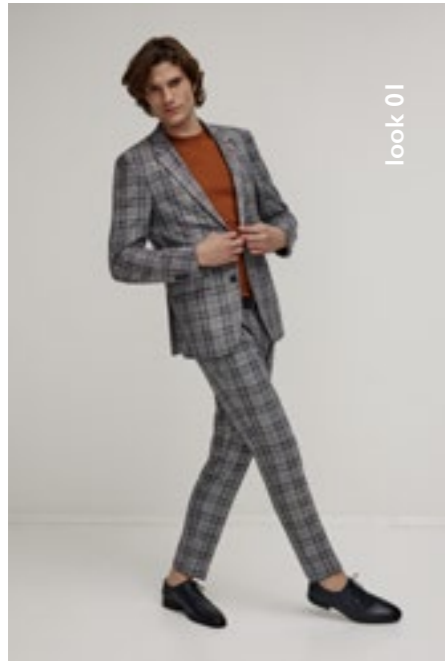


fall / winter 23

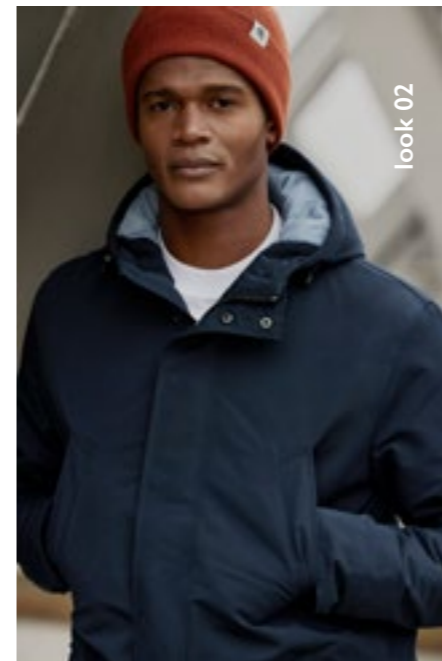
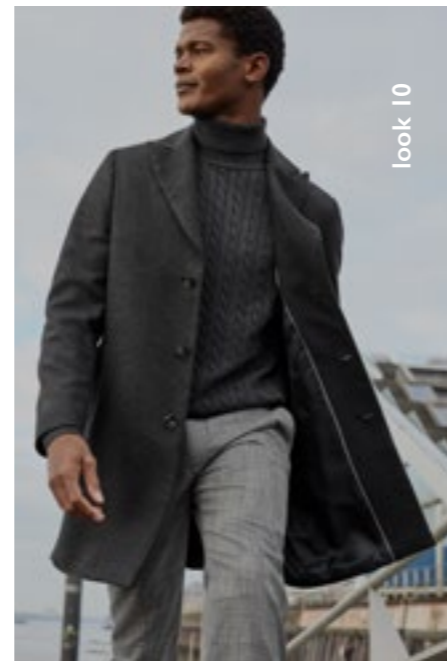
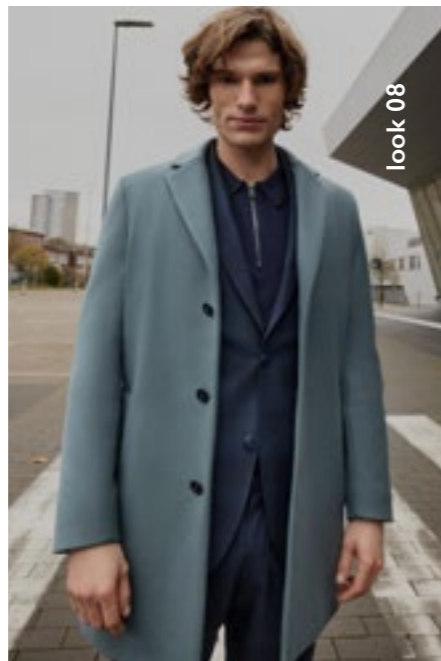
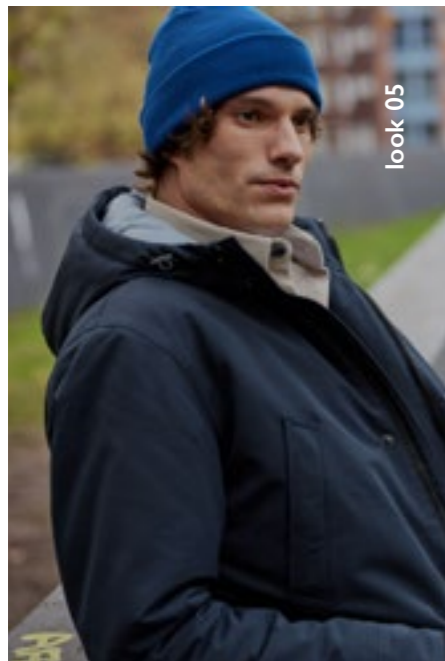
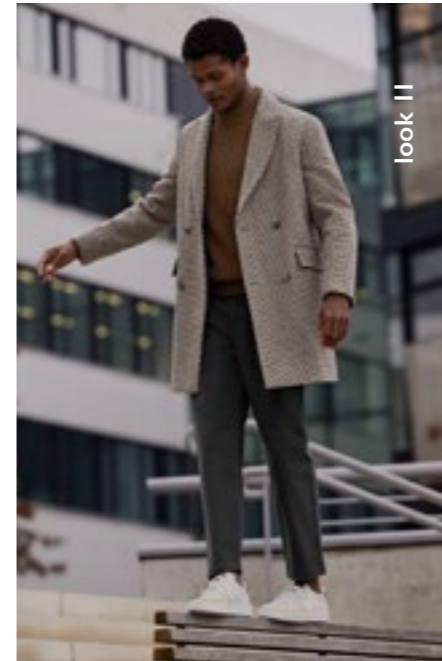
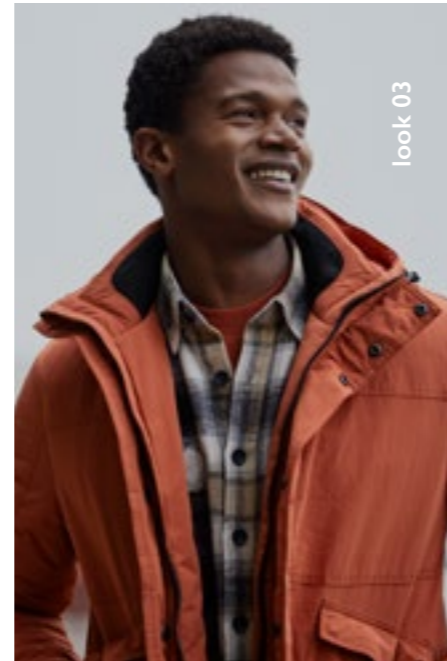
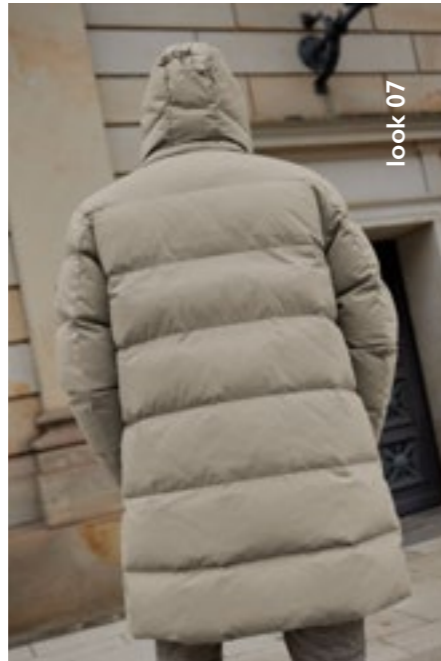
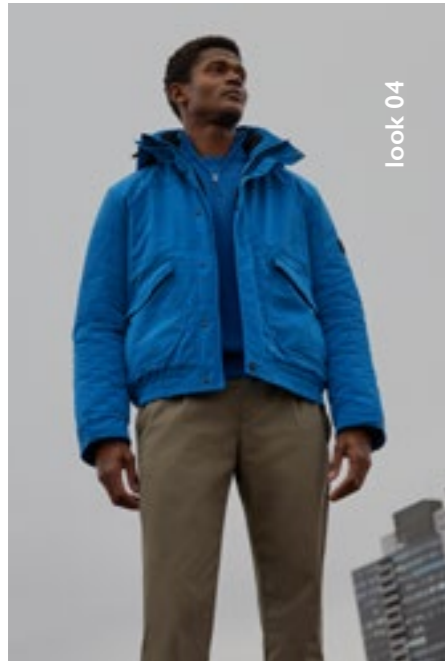
Jacket 1526-A040-2890, Jacket 1513-H030-3382, Trousers 1370-A001-740, Knitwear 1863-A060, Knitwear D4054-A001



# OVERVIEW — LOOKS



# IT'S COLD ——— OUTSIDE



**EXPLORE  
our inspirational  
looks in our  
DIGITAL SHOWROOM!**

STEP INTO





fall / winter

23